



UNIDRIVE M400

Manufacturing Automation drive

Fast set-up and diagnosis with real-text display, plus integrated CODESYS based PLC for open loop applications

Unidrive M100

Unidrive M200

Unidrive M300

Unidrive M400

Unidrive M600

Unidrive M700

0.25 kW - 110 kW Heavy Duty
(0.33 hp - 150 hp)

100 V | 200 V | 400 V | 575 V | 690 V



The Unidrive M Manufacturing Automation drive family

Unidrive M – A Manufacturing Automation drive family tailored to customer needs

Led by the results of extensive customer-driven market research, we have tailored six Unidrive M feature-sets to specific application needs identified within Manufacturing Automation. The Unidrive M400 adds to the family an optional enhanced LCD keypad, precise frequency following and onboard Programmable Logic Control (PLC) for open loop applications. It also provides an easy upgrade for existing Commander SK high power applications or where a programmable LogicStick is used.

For more information on the full Unidrive M family, please download the Unidrive M Overview brochure or the 'Discover Unidrive M' App (available on the App Store, Android and online) via www.UnidriveM.com.



Unidrive M400 features



Optional AI-485 Adaptor for RS485 communications

Optional AI-Back-up Adaptor allows the drive to use an SD card for parameter cloning and acts as an input for 24 V back-up

Optional CI-Keypad - intuitive plain text multilingual back-lit LCD keypad for rapid set-up and superior diagnostics

Optional IP66 Remote Keypad available for flexible mounting

Power-on / Drive status LED

Dual onboard Safe Torque Off (STO) terminals for easy SIL3 conformity

Drive rated to IP21 / UL open class (NEMA 1) on size 1 to 4 as standard

Conduit kits are available to meet UL Type 1 rating

Conventional surface and DIN rail mounting (DIN rail mounting available on size 1 and 2 only)

User-friendly control connections

Easy-to-disconnect internal EMC filter*

User-friendly power connections*

Easy-to-remove terminal cover with tool-less close system (patent pending)

Robust cable management system providing grounding point for shielded control and power cables

Typical System Integration (SI) option module

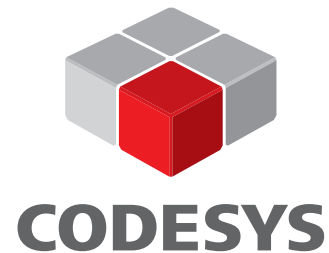
System Integration (SI) module slot for optional communications and additional I/O

*Features and their locations vary on some drive sizes

Unidrive M400 AC drive at a glance

Fast set-up and diagnosis with real-text display, plus integrated CODESYS based PLC

M400 minimizes machine downtime with its optional intuitive advanced LCD keypad that offers real-text multi-language display for rapid set-up and superior diagnostics. Its onboard PLC with real-time tasking can be used for simple logic control using Machine Control Studio programming software (powered by CODESYS) to enhance drive application capability.



Maximize productivity with high performance control of AC motors

Unidrive M400's advanced Rotor Flux Control (RFC) algorithm ensures maximum stability and machine control. It provides a high bandwidth motor control algorithm with 166 μ s current loop update rates and 180 % motor overload for heavy industrial machinery applications.

Maximize throughput and easily meet machine safety requirements

Unidrive M400 has onboard dual Safe Torque Off (STO) inputs for easy safety system integration, eliminating external components such as contactors. Compliance with SIL3 is simple while machine productivity is enhanced.

Robust design

After extensive customer research, Unidrive M400 has been designed and tested for leading reliability in manufacturing environments. It features:

- Unique advanced cooling design featuring a patented flow system that helps cool the drive more effectively while protecting internal components

- Conformally coated PCBs
- 180 % overload for 3 s or 150 % for 60 s
- Wide supply voltage tolerance
- Drive meets IP21 as standard
- Higher temperature operation with de-rating
- Intelligent 3 speed user-replaceable cooling fan with patented fan-fail detection circuit

Fast parameter transfer without mains power

For fast, serial machine production the AI-Back-up Adaptor option plugs into the top of the drive to allow configuration settings and Machine Control Studio programs (powered by CODESYS) to be copied without the need to apply mains power. Files are stored on an SD memory card for easy handling.



Enhance productivity through easy integration with automation systems and reduce machine downtime

Unidrive M400 provides optional RS485 communications and a port for a System Integration (SI) option module. SI modules include Ethernet, EtherCAT, PROFIBUS, DeviceNet and CANopen network communications, and additional I/O. These allow remote control and diagnostics across different networks, while I/O can be configured to accept an encoder or frequency/direction inputs for frequency following.

Reduce machine size and cost

Unidrive M400's compact drive dimensions are among the smallest in class at every power rating. Packed full of onboard features, such as programmable automation for simple applications and 2 x STO terminals, Unidrive M400 provides a powerful economical solution, eliminating the need for many external components such as PLCs and safety contactors.

Easy to access machine control features

Our software tools, keypads and memory storage devices provide easy and fast access to Unidrive M's machine control features for configuration, monitoring and diagnostics.

Powerful and easy field service and upgrade

The M400 is designed to extend the field service life of previous generations of products. It also provides the easiest possible upgrade for OEM machine designs that currently use Commander SK drives in high power applications or where a LogicStick is used. Features include:

- Compatible dimensions
- Onboard programming
- Extended power ratings up to 110 kW (150 hp)
- Support for the import of Commander SK parameter files and drive cloning

Typical applications:

Speed control for conveyors, positive displacement pumps, material transport and cutting, woodworking and where fast set-up and diagnostics are required.





Machine Control Studio programming software powered by CODESYS



Control Techniques' Machine Control Studio software provides a flexible and intuitive environment for programming Unidrive M's new automation and motion control features. This new software offers programming for the Unidrive M400's onboard PLC.

Machine Control Studio is powered by CODESYS, the leading open software for programmable machine control. The programming environment is fully EN/IEC 61131-3 compliant, meaning that it is familiar and therefore fast and easy to use for control engineers around the world.

The following EN/IEC 61131-3 programming languages are supported:

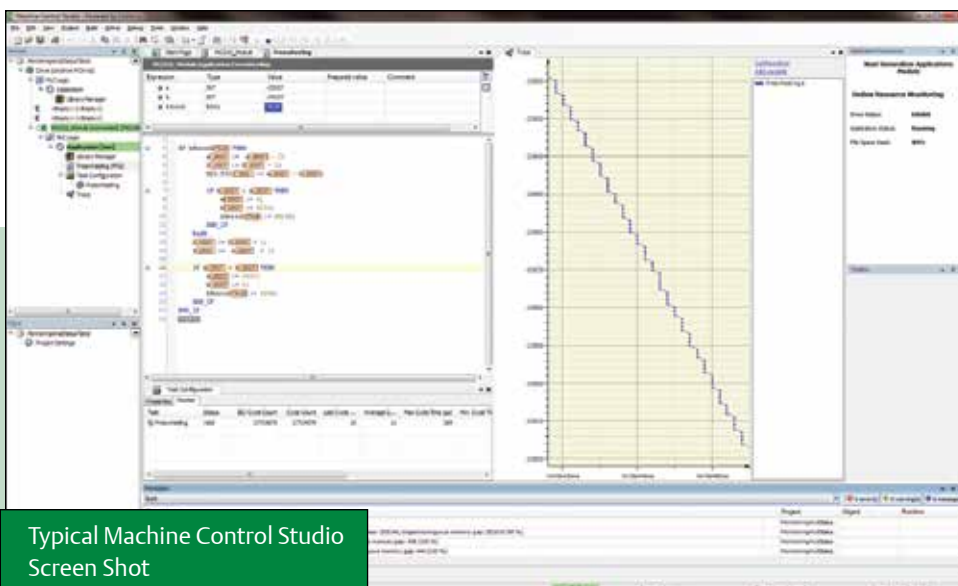
- Structured Text (ST)
- Function Block Diagram (FBD)
- Structured Function Chart (SFC)
- Ladder Diagram (LD)
- Instruction List (IL)

Also supported:

- Continuous Function Chart (CFC)

Intuitive IntelliSense functionality helps to write consistent and robust programming, speeding up software development. Programmers have access to a vibrant open-source community

for function blocks. Control Techniques also provides support for customers' own function block libraries, with on-line monitoring of program variables with user defined watch windows and help for on-line change of program, in line with current PLC practices.



Typical Machine Control Studio Screen Shot



Coating line application

Power System Flexibility

Unidrive M's power stage enhances flexibility and energy efficiency:

- Low losses, up to 98 % efficient.
- Low power standby mode. In some applications, drives can sit idle for significant periods; M400's reduced standby power saves energy.
- Intelligently controlled 3-speed cooling fan adjusts to the motor load and environmental conditions. This results in power saving, extended fan life and reduced acoustic noise.
- Silent motor operation with high PWM switching frequencies up to 16 kHz.

Motor control modes include:

Control Mode	Features
Open loop vector or V/Hz induction motor control	Open loop motor control for induction motors, providing good performance and the easiest configuration. V/Hz can be used in multi-motor systems.
Enhanced open loop Rotor Flux Control for induction motors (RFC-A)	High performance speed and torque control through an advanced vector algorithm, utilizing current feedback to greatly enhance performance for all induction motor sizes without the need for a feedback device.

Unidrive M400 option choices and terminal layout

Control Mode

1. Open loop vector or V/Hz induction motor control
2. Open loop Rotor Flux Control for induction motors (RFC-A)



Optional Drive Programming and Operator Interface

Unidrive M Connect



CI-Keypad



Remote Keypad



Operator Interface



AI-Back-up Adaptor
(provides SD card usage)



Input/Output

SI-I/O



4 x Digital I/O
3 x Analog input
(default) / Digital input
1 x Analog output
(default) / Digital input
2 x Relay

Standard



4 x Analog I/O
7 x Digital I/O
2 x STO
1 x Relay

DC back up power supply

AI-Back-up Adaptor
(Input for 24 V back-up)





Applications with PLC Functionality

Standard

Easy to use onboard PLC using industry standard CODESYS programming environment



Communications

AI-485 Adaptor



CI-485 Adaptor



SI-EtherCAT



SI-DeviceNet



SI-PROFIBUS



SI-CANopen



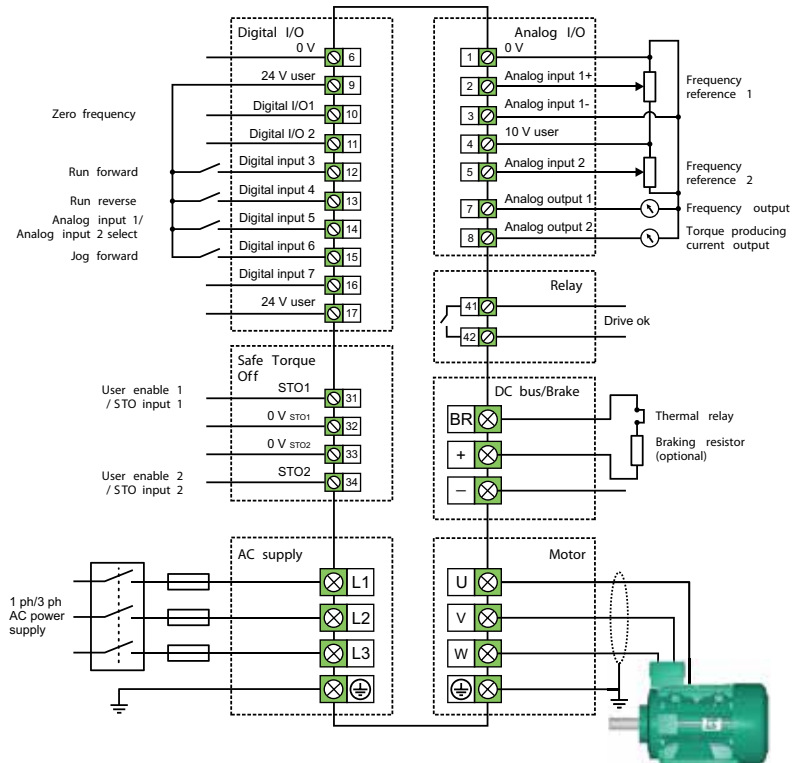
SI-Ethernet



SI-PROFINET



Terminal Layout







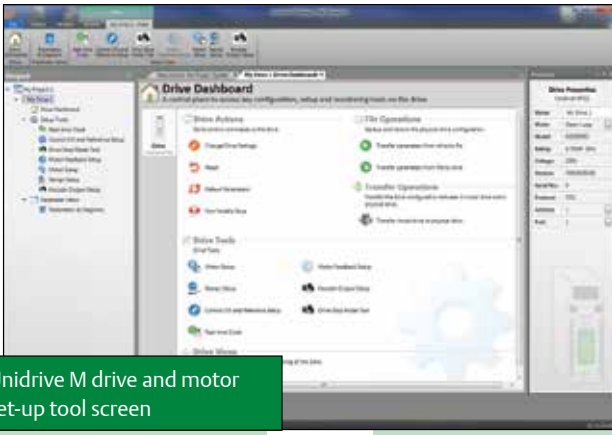
Typical woodworking application

Fast and Easy access for Commissioning, Monitoring and Diagnostics
 Unidrive M keypads, memory devices and software tools make it easy to access Unidrive M400's full feature set, allowing users to optimize drive tuning, back-up the configuration set and troubleshoot more quickly.

User interface options

Unidrive M benefits from two optional keypad choices to meet your application needs.

Type		Benefit
CI-Keypad		Intuitive plain text, multi-language LCD keypad for rapid set-up and superior diagnostics maximizes machine up-time. Innovative clipless fit provides easy removal.
Remote Keypad		All the features of the CI-Keypad LCD, but remote mountable (using the AI-485 or CI-485 Adaptor along with a common comms lead). This allows flexible mounting on the outside of a panel and meets IP66 (NEMA 4).



Unidrive M drive and motor set-up tool screen

Unidrive M Connect commissioning tool

Based on Control Techniques' 25 years of experience, Unidrive M Connect is our latest drive configuration tool for commissioning, optimizing and monitoring drive/system performance. Its development draws from extensive user research, using human centered design principles to give the ultimate user experience:

- Fast task based commissioning and easy maintenance of the Unidrive M family is simplified via familiar Windows interface
- Intuitive graphical tools enhance and simplify user experience
- For experienced users, dynamic drive logic diagrams and enhanced searchable listings are present
- Drive and motor performance can be optimized with minimal specialized drive knowledge
- Tool is scalable to match application requirements
- Supports the import of Commander SK parameter files and allows full drive cloning (i.e. parameter sets and application program)
- Multiple simultaneous communications channels for a more complete overview of the system
- Drive discovery gives the ability to find drives on a network automatically without the user having to specify their addresses
- Automatic RTU baud rate scanning on the M400 RS485 connection

Portable SD memory card

Unidrive M400 uses popular SD cards for quick and easy parameter and program storage using the AI-Back-up Adaptor. SD cards provide a huge memory capability allowing a complete system reload if required and can be easily pre-programmed on a common PC.

Performance motor control

Control Techniques' unique motor control algorithms combined with the latest microprocessor technology ensure that Unidrive M400 offers high stability and bandwidth for many industrial motor types. This enables you to maximize machine throughput and efficiency in every application using open loop AC induction motors.

Unidrive M400 feature and specification table

Performance	Current loop update: 166 μ s
	Heavy Duty peak rating: 180 % (3 s), 150 % (60 s)
	Maximum output frequency: 550 Hz
	Switching frequency range: 0.67, 1, 2, 3, 4, 6, 8, 12, 16 kHz (3 kHz default)
Onboard intelligence	Programmable Logic Control (PLC) - memory: 8 kB
	1 x Real-time task (16ms), 1 x Background task
Mechanical attributes	DIN rail mountable (size 1 and 2)
	Commander SK compatible mechanical footprint either as standard or with conversion plates
Parameter back-up	Serial port cloning (using optional AI-485 Adaptor or CI-485 Adaptor)
	SD card (using optional AI-Back-up Adaptor)
Feedback	Encoder Input 1
Onboard I/O	2 x Analog inputs, 2 x Analog outputs
	5 x Digital inputs, 2 x Bidirectional digital inputs or outputs
	1 x Relay
Machine safety	2 x Safe Torque Off (STO) inputs
Back-up power	24 V control back-up (using optional AI-Back-up Adaptor)
Other	Temperature controlled fan with standby (off)
	User replaceable fan(s)
	Conformal coating
	Standby mode (energy saving)
	User defined security levels (e.g. restricted access or read-only parameters via user defined security code)

Unidrive M400 ratings and specifications

100/120 Vac ±10 %							
Order Code	Supply Phases	Heavy Duty			Normal Duty		
		Max Continuous Current (A)	Motor Shaft Power (kW)	Motor Shaft Power (HP)	Max Continuous Current (A)	Motor Shaft Power (kW)	Motor Shaft Power (HP)
M400-011 00017	1	1.7	0.25	0.33	For Normal Duty applications, use Heavy Duty ratings.		
M400-011 00024	1	2.4	0.37	0.5			
M400-021 00042	1	4.2	0.75	1			
M400-021 00056	1	5.6	1.1	1.5			

200/240 Vac ±10 %										
Order Code	Supply Phases	Heavy Duty			Normal Duty					
		Max Continuous Current (A)	Motor Shaft Power (kW)	Motor Shaft Power (HP)	Max Continuous Current (A)	Motor Shaft Power (kW)	Motor Shaft Power (HP)			
M400-012 00017	1	1.7	0.25	0.33	For Normal Duty applications, use Heavy Duty ratings.					
M400-012 00024	1	2.4	0.37	0.5						
M400-012 00033	1	3.3	0.55	0.75						
M400-012 00042	1	4.2	0.75	1						
M400-022 00024	1/3	2.4	0.37	0.5						
M400-022 00033	1/3	3.3	0.55	0.75						
M400-022 00042	1/3	4.2	0.75	1						
M400-022 00056	1/3	5.6	1.1	1.5						
M400-022 00075	1/3	7.5	1.5	2						
M400-032 00100	1/3	10	2.2	3						
M400-042 00133	1/3	13.3	3	3						
M400-042 00176	3	17.6	4	5						
M400-052 00250	3	25	5.5	7.5				30	7.5	10
M400-062 00330	3	33	7.5	10				50	11	15
M400-062 00440	3	44	11	15	58	15	20			
M400-072 00610	3	61	15	20	75	18.5	25			
M400-072 00750	3	75	18.5	25	94	22	30			
M400-072 00830	3	83	22	30	117	30	40			
M400-082 01160	3	116	30	40	149	37	50			
M400-082 01320	3	132	37	50	180	45	60			
M400-092 01760	3	176	45	60	216	55	75			
M400-092 02190	3	219	55	75	266	75	100			

380/480 Vac ±10 %							
Order Code	Supply Phases	Heavy Duty			Normal Duty		
		Max Continuous Current (A)	Motor Shaft Power (kW)	Motor Shaft Power (HP)	Max Continuous Current (A)	Motor Shaft Power (kW)	Motor Shaft Power (HP)
M400-024 00013	3	1.3	0.37	0.5	For Normal Duty applications, use Heavy Duty ratings.		
M400-024 00018	3	1.8	0.55	0.75			
M400-024 00023	3	2.3	0.75	1			
M400-024 00032	3	3.2	1.1	1.5			
M400-024 00041	3	4.1	1.5	2			
M400-034 00056	3	5.6	2.2	3			
M400-034 00073	3	7.3	3	3			
M400-034 00094	3	9.4	4	5			
M400-044 00135	3	13.5	5.5	7.5			
M400-044 00170	3	17	7.5	10			
M400-054 00270	3	27	11	20	30	15	20
M400-054 00300	3	30	15	20	30	15	20
M400-064 00350	3	35	15	25	38	18.5	25
M400-064 00420	3	42	18.5	30	48	22	30

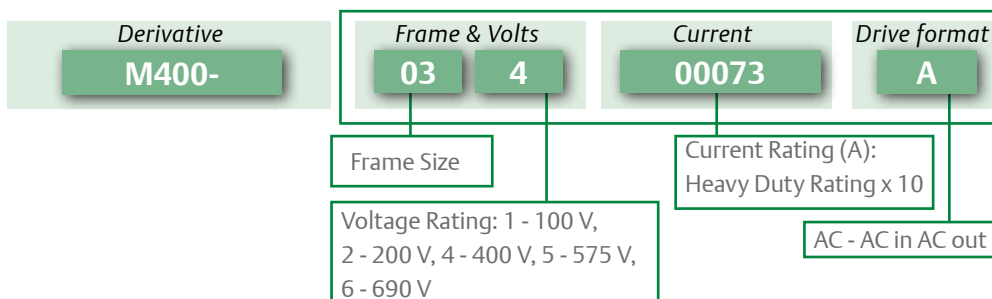
M400-064 00470	3	47	22	30	63	30	40
M400-074 00660	3	66	30	50	79	37	50
M400-074 00770	3	77	37	60	94	45	60
M400-074 01000	3	100	45	75	112	55	75
M400-084 01340	3	134	55	100	155	75	100
M400-084 01570	3	157	75	125	184	90	125
M400-094 02000	3	200	90	150	221	110	150
M400-094 02240	3	224	110	150	266	132	200

500/575 Vac ± 10 %							
Drive	Supply Phases	Heavy Duty			Normal Duty		
		Max Continuous Current (A)	Typical Output (kW)	Motor Power (HP)	Max Continuous Current (A)	Typical Output (kW)	Motor Power (HP)
M400-055 00030 A	3	3	1.5	2	3.9	2.2	3
M400-055 00040 A	3	4	2.2	3	6.1	4	5
M400-055 00069 A	3	6.9	4	5	10	5.5	7.5
M400-065 00100 A	3	10	5.5	7.5	12	7.5	10
M400-065 00150 A	3	15	7.5	10	17	11	15
M400-065 00190 A	3	19	11	15	22	15	20
M400-065 00230 A	3	23	15	20	27	18.5	25
M400-065 00290 A	3	29	18.5	25	34	22	30
M400-065 00350 A	3	35	22	30	43	30	40
M400-075 00440 A	3	44	30	40	53	45	50
M400-075 00550 A	3	55	37	50	73	55	60
M400-085 00630 A	3	63	45	60	86	75	75
M400-085 00860 A	3	86	55	75	108	90	100
M400-095 01040 A	3	104	75	100	125	110	125
M400-095 01310 A	3	131	90	125	150	110	150

500/690 Vac ± 10 %							
Drive	Supply Phases	Heavy Duty			Normal Duty		
		Max Continuous Current (A)	Typical Output (kW)	Motor Power (HP)	Max Continuous Current (A)	Typical Output (kW)	Motor Power (HP)
M400-076 00190 A	3	19	15	20	23	18.5	25
M400-076 00240 A	3	24	18.5	25	30	22	30
M400-076 00290 A	3	29	22	30	36	30	40
M400-076 00380 A	3	38	30	40	46	37	50
M400-076 00440 A	3	44	37	50	52	45	60
M400-076 00540 A	3	54	45	60	73	55	75
M400-086 00630 A	3	63	55	75	86	75	100
M400-086 00860 A	3	86	75	100	108	90	125
M400-096 01040 A	3	104	90	125	125	110	150
M400-096 01310 A	3	131	110	150	150	132	175

See overleaf for Normal Duty and Heavy Duty definitions.

Key:



Unidrive M400 ratings and specifications

Heavy Duty

Suitable for demanding applications, current overload of 180 % (3 s) is available for dynamic loads.

Normal Duty

Suitable for most applications, with a current overload capacity of 110 %.

Environmental safety and electrical conformance

- Size 1 to 4: IP21 / UL open class (NEMA 1).
IP20 when the AI-Back-up or AI-485 Adaptors are fitted.
UL TYPE 1 compliance requires the appropriate Conduit kit to be fitted.
- Size 5 to 9: IP20 / UL open class (NEMA 1).
UL TYPE 1 compliance requires the appropriate Conduit kit to be fitted.
IP65 / UL TYPE 12 rating is achieved on the rear of the drive when through panel mounted.
- Ambient temperature -20 °C (-4 °F) to 40 °C (104 °F) as standard. Up to 60 °C (140 °F) with derating.
- Storage temperature -40 °C to 60 °C (-40 °F to 140 °F).
- Humidity 95 % maximum (non-condensing) at 40 °C (104 °F) in accordance with EN/IEC 60068-2-78 and ANSI/EIA-364-31.
- EN/IEC 60068-2-60, Method 4 Corrosive gas.
- Altitude: 0 to 3000 m (0 to 9843 ft), derate 1 % per 100 m (328 ft) between 1000 m and 3000 m (3281 ft and 9843 ft).
- Random Vibration: Tested in accordance with EN/IEC 60068-2-64 with SI and AI option modules fitted.

- Mechanical Shock: Tested in accordance with EN/IEC 60068-2-29.
- Electromagnetic Immunity complies with EN/IEC 61800-3 and EN/IEC 61000-6-2.
- With onboard EMC filter, complies with EN/IEC 61800-3 (2nd environment).
- EN/IEC 61000-6-3 and EN/IEC 61000-6-4 with optional footprint EMC filter.
- EN/IEC 60146-1-1 Supply conditions.
- EN/IEC 61800-5-1 Electrical Safety.
- EN/IEC 61131-2 I/O.
- Safe Torque Off, independently assessed by TÜV to EN/IEC 61800-5-2 SIL 3 and EN ISO 13849-1 PL.
- UL 508C Electrical Safety.

Optional keypads

Description/Order code
CI-Keypad
Remote Keypad

Optional accessories

Description/Order code
AI-Back-up Adaptor
AI-485 Adaptor
CI-485 Adaptor

Dimensions and Weight



Frame Size		1	2	3	4
Dimensions (H x W x D)	mm	137 x 75 x 130	180 x 75 x 150	200 x 90 x 160	245 x 115 x 175
	in	5.4 x 3.0 x 5.1	7.1 x 3.0 x 5.9	7.9 x 3.5 x 6.3	9.7 x 4.5 x 6.9
Weight	kg (lb)	0.75 (1.65)	1.0 (2.2)	1.5 (3.3)	3.13 (6.9)

Notes:

Height dimension (H) does not include mounting feet on sizes 1 to 4.

Additional distance should be added to the height dimension (H) when the following options are fitted on sizes 1 to 6:

- AI-Back-up Adaptor: 15 mm (0.59 in)
- AI-485 Adaptor: 26 mm (1.02 in)

Optional external EMC filters

Unidrive M built-in EMC filter complies with EN/IEC 61800-3 (2nd environment). External EMC filters are required for compliance with EN/IEC 61000-6-4 as per the table below.

Frame size	Voltage	Phases	Type	Order code
1	All	1	Standard	4200-1000
	All	1	Low leakage	4200-1001
2	100 V	1	Standard	4200-2000
		1	Low leakage	4200-2001
	200 V	1	Standard	4200-2002
		1	Low leakage	4200-2003
	400 V	3	Standard	4200-2004
		3	Low leakage	4200-2005
3	200 V	3	Standard	4200-3000
		3	Low leakage	4200-3001
		3	Standard	4200-3004
	400 V	3	Low leakage	4200-3005
		3	Standard	4200-3008
		3	Low leakage	4200-3009
4	200 V	1	Standard	4200-4000
		1	Low leakage	4200-4001
		3	Standard	4200-4002
		3	Low leakage	4200-4003
	400 V	3	Standard	4200-4004
5	200 V	3	Standard	4200-0312
	400 V	3	Standard	4200-0402
	575 V	3	Standard	4200-0122
6	200 V	3	Standard	4200-2300
	400 V	3	Standard	4200-4800
	575 V	3	Standard	4200-3690
7	200 V & 400 V	3	Standard	4200-1132
	690 V	3	Standard	4200-0672



	5	6	7	8	9*
	379x 141x 200	379 x 210 x 227	548 x 270 x 280	785 x 310 x 290	940 x 310 x 290
	14.9 x 5.6 x 7.9	14.9 x 8.3 x 8.9	21.6 x 10.6 x 11.0	30.9 x 12.2 x 11.4	37.0 x 12.2 x 11.4
	7.4 (16.3)	14 (30.9)	45 (99.2)	50 (110.2)	

Conduit kit

When the following kits are fitted to the drive, it meets UL Type 1.

Frame size	Order code
1	3470-0091
2	3470-0094
3	3470-0098
4	3470-0102
5	3470-0069
6	3470-0059
7	3470-0080
8	3470-0088

Internal brake resistor

Frame size	Order code
5	1299-0003

Through hole IP65 kit

IP65 / UL TYPE 12 rating is achieved on the rear of the drive when through panel mounted using the following kits.

Frame size	Order code
5	3470-0067
6	3470-0055
7	3470-0079
8	3470-0083

Retrofit mounting brackets

These mounting brackets ensure the drive can be mounted on existing Commander SK installations.

Frame size	Order code
3	3470-0097
4	3470-0101
5	3470-0066
6	3470-0074
7	3470-0078
8	3470-0087

Fan replacement kit

Frame size	Order code
1	3470-0092
2	3470-0095
3	3470-0099
4	3470-0103

Cable grommet kit

Frame size	Order code
7	3470-0086
8	3470-0089 (Single cable)
	3470-0090 (Dual cable)

For a full list of patents and patent applications, visit www.controltechniques.com/patents.

*Future availability.

EMERSON. CONSIDER IT SOLVED.™

www.emersonindustrial.com

Products that increase productivity, reduce operating costs and maximize customer choice

As part of Emerson Industrial Automation, Control Techniques and Leroy Somer are leading manufacturers of AC and DC variable speed drives, servos, motors and power conversion technologies for commercial and industrial applications. Our extensive range of

innovative products are used in the most demanding applications requiring performance, reliability and energy efficiency, while providing the extensive features needed to maximize customer value and choice. Our solutions are sold Worldwide through a network of over 90 Automation Centres and resellers in 70 countries.



© Emerson 2014. The information contained in this brochure is for guidance only and does not form part of any contract. The accuracy cannot be guaranteed as Emerson have an ongoing process of development and reserve the right to change the specification of their products without notice.